

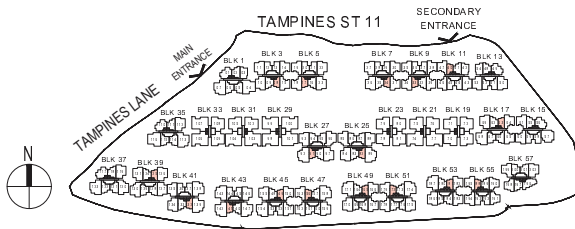
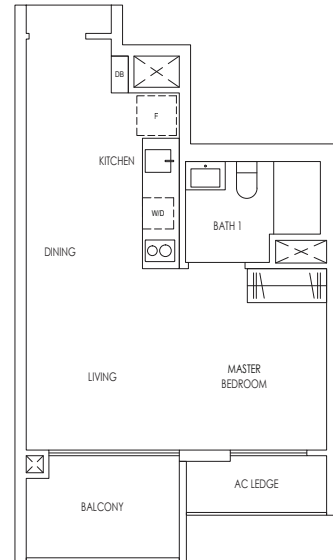
1 Bedroom

Type A1

43 sqm / 463 sqft

Blk 5 #02-17 to #12-17
 Blk 9 #02-33 to #12-33
 Blk 17 #02-63 to #12-63
 Blk 27 #02-91 to #12-91
 Blk 39 #02-125 to #12-125
 Blk 43 #02-141 to #12-141
 Blk 45 #02-149 to #12-149
 Blk 49 #02-165 to #12-165
 Blk 53 #02-181 to #12-181

MIRROR UNIT
 Blk 3 #02-08 to #12-08
 Blk 7 #02-24 to #12-24
 Blk 11 #02-40 to #12-40
 Blk 25 #02-82 to #12-82
 Blk 41 #02-132 to #12-132
 Blk 47 #02-156 to #12-156
 Blk 51 #02-172 to #12-172
 Blk 55 #02-188 to #12-188



KEY PLAN NOT TO SCALE

1 Bedroom+Study

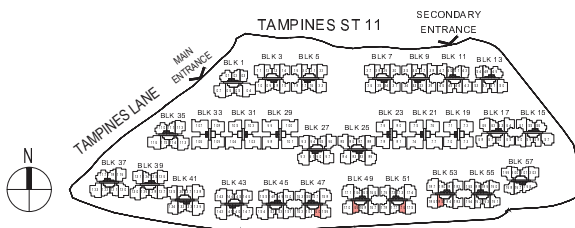
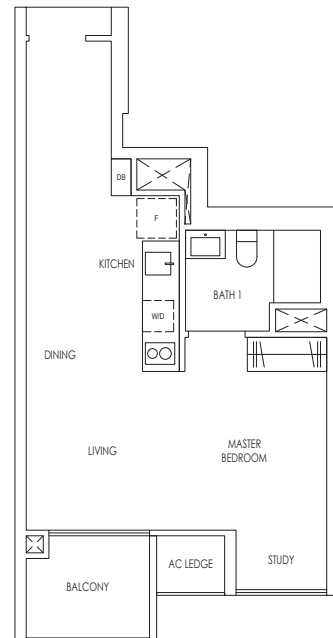
Type A2S

45 sqm / 484 sqft

Blk 49 #02-169 to #12-169
 Blk 53 #02-185 to #12-185

MIRROR UNIT

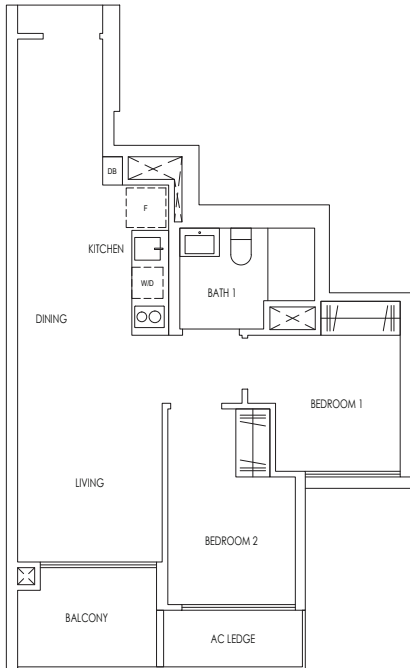
Blk 47 #02-160 to #12-160
 Blk 51 #02-176 to #12-176



KEY PLAN NOT TO SCALE

Area includes AC ledge, balcony and strata void area where applicable. Some units are mirror images of the floor plans shown in the brochure. Orientations and facings will differ depending on the unit you are purchasing, please refer to the key plan. The above plans and illustrations are subject to changes as may be required or approved by the relevant authorities and do not form part of any offer or contract. Areas are estimates only and are subject to final survey. The balcony shall not be enclosed unless with the approved balcony screen. For an illustration of the approved balcony screen, please refer to Annex 1 of this brochure.

2 Bedroom



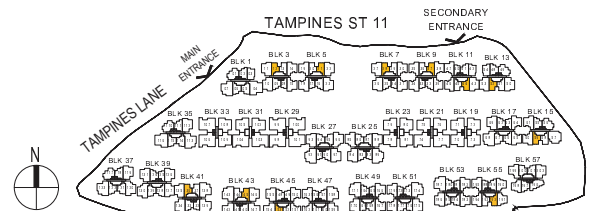
Type B1

54 sqm / 581 sqft

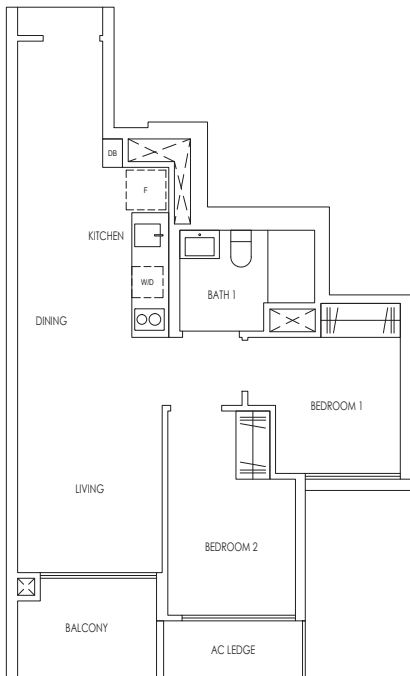
Blk 5 #02-21 to #12-21
 Blk 9 #02-37 to #12-37
 Blk 13 #02-52 to #12-52
 Blk 15 #02-59 to #12-59
 Blk 43 #02-145 to #12-145
 Blk 45 #02-153 to #12-153

MIRROR UNIT

Blk 3 #02-12 to #12-12
 Blk 7 #02-28 to #12-28
 Blk 11 #02-44 to #12-44
 Blk 41 #02-136 to #12-136
 Blk 55 #02-192 to #12-192



KEY PLAN NOT TO SCALE



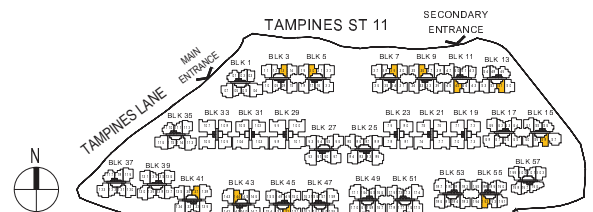
Type B2

55 sqm / 592 sqft

Blk 3 #02-13 to #12-13
 Blk 7 #02-29 to #12-29
 Blk 11 #02-45 to #12-45
 Blk 41 #02-137 to #12-137
 Blk 55 #02-193 to #12-193

MIRROR UNIT

Blk 5 #02-20 to #12-20
 Blk 9 #02-36 to #12-36
 Blk 13 #02-51 to #12-51
 Blk 15 #02-58 to #12-58
 Blk 43 #02-144 to #12-144
 Blk 45 #02-152 to #12-152



KEY PLAN NOT TO SCALE

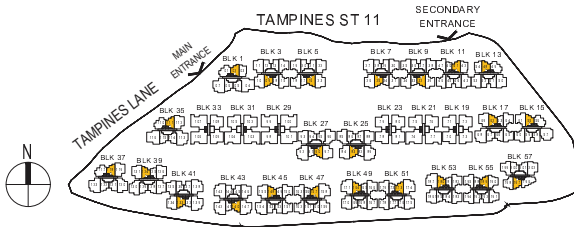
Area includes AC ledge, balcony and strata void area where applicable. Some units are mirror images of the floor plans shown in the brochure. Orientations and facings will differ depending on the unit you are purchasing, please refer to the key plan. The above plans and illustrations are subject to changes as may be required or approved by the relevant authorities and do not form part of any offer or contract. Areas are estimates only and are subject to final survey. The balcony shall not be enclosed unless with the approved balcony screen. For an illustration of the approved balcony screen, please refer to Annex 1 of this brochure.

2 Bedroom

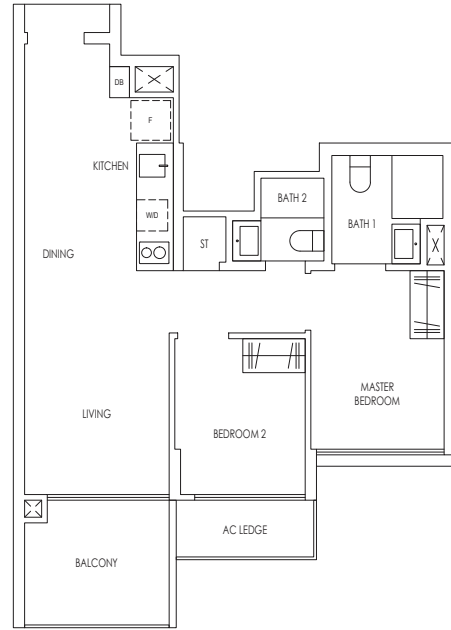
Type B3

57 sqm / 614 sqft

Blk 1 #12-02	MIRROR UNIT
Blk 3 #12-09	Blk 5 #12-16
Blk 7 #12-25	Blk 9 #12-32
Blk 11 #12-41	Blk 13 #12-48
Blk 25 #12-83	Blk 15 #12-55
Blk 35 #12-111	Blk 17 #12-62
Blk 37 #12-118	Blk 27 #12-90
Blk 41 #12-133	Blk 39 #12-124
Blk 47 #12-157	Blk 43 #12-140
Blk 51 #12-173	Blk 45 #12-148
Blk 55 #12-189	Blk 49 #12-164
Blk 57 #12-197	Blk 53 #12-180



KEY PLAN NOT TO SCALE



2 Bedroom Premium

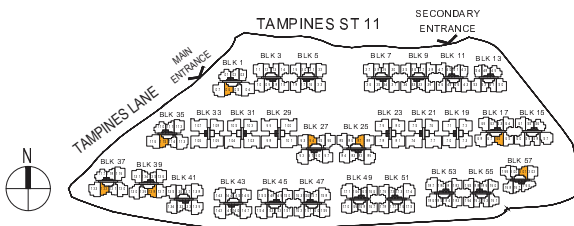
Type B4P

61 sqm / 657 sqft

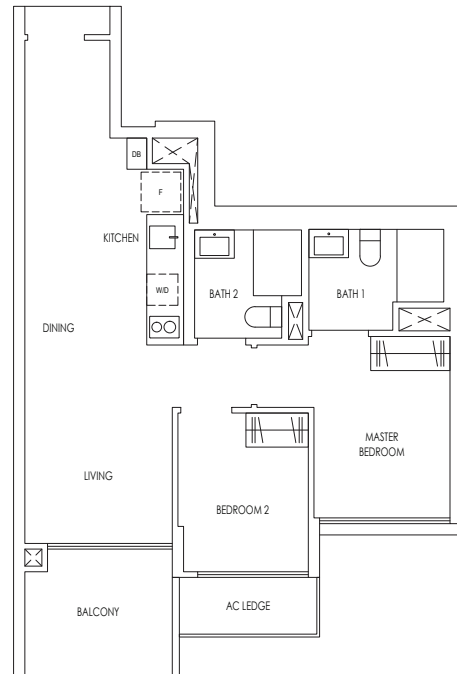
Blk 1 #02-06 to #12-06
Blk 25 #04-87 to #12-87
Blk 35 #02-115 to #12-115
Blk 37 #02-122 to #12-122
Blk 57 #02-201 to #12-201

MIRROR UNIT

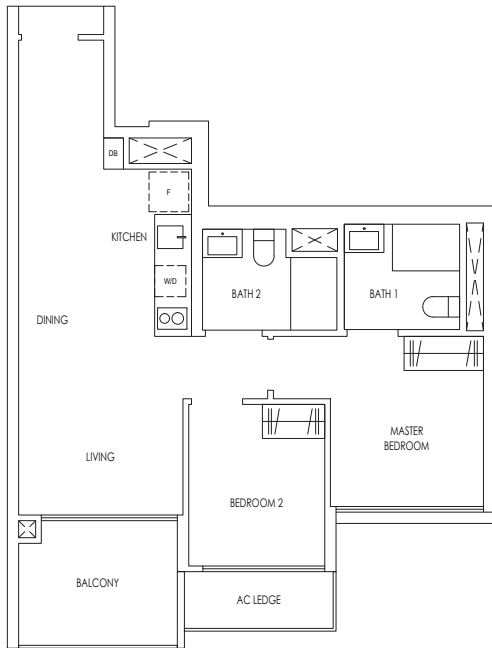
Blk 17 #02-66 to #12-66
Blk 27 #04-94 to #12-94
Blk 39 #02-128 to #12-128



KEY PLAN NOT TO SCALE



Area includes AC ledge, balcony and strata void area where applicable. Some units are mirror images of the floor plans shown in the brochure. Orientations and facings will differ depending on the unit you are purchasing, please refer to the key plan. The above plans and illustrations are subject to changes as may be required or approved by the relevant authorities and do not form part of any offer or contract. Areas are estimates only and are subject to final survey. The balcony shall not be enclosed unless with the approved balcony screen. For an illustration of the approved balcony screen, please refer to Annex 1 of this brochure.



2 Bedroom Premium

Type B5P

63 sqm / 678 sqft

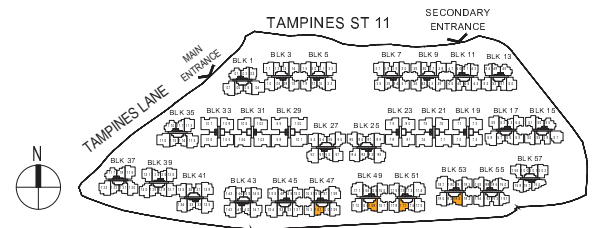
Blk 47 #02-161 to #12-161

Blk 51 #02-177 to #12-177

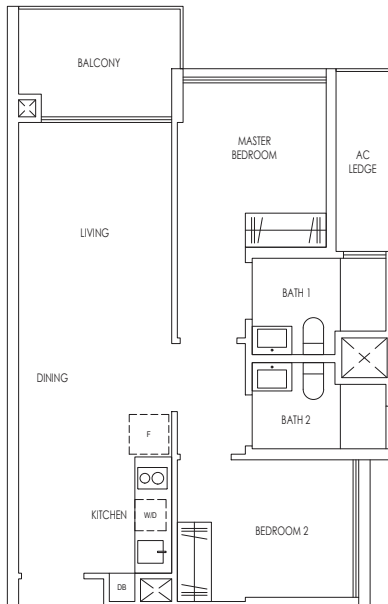
MIRROR UNIT

Blk 49 #02-168 to #12-168

Blk 53 #02-184 to #12-184



KEY PLAN NOT TO SCALE



Type B6P

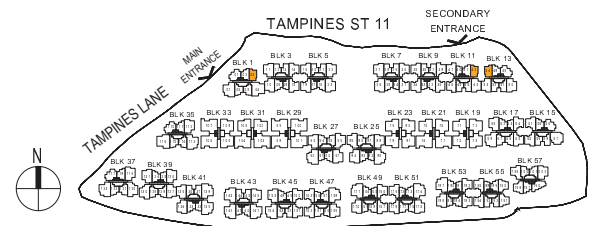
63 sqm / 678 sqft

Blk 1 #03-03 to #12-03

Blk 11 #02-42 to #12-42

MIRROR UNIT

Blk 13 #02-54 to #12-54



KEY PLAN NOT TO SCALE

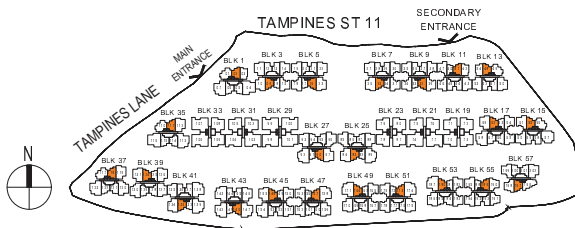
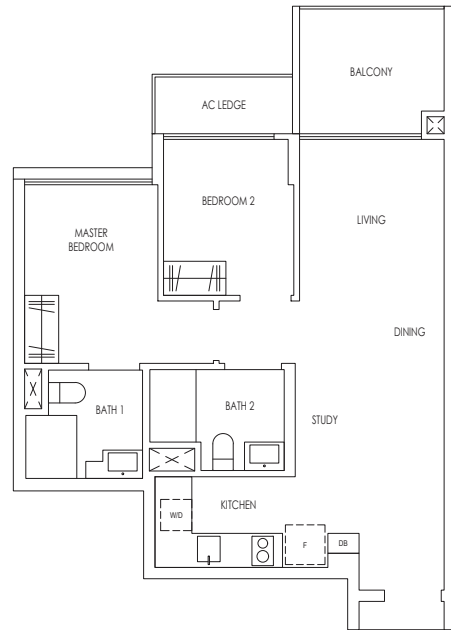
Area includes AC ledge, balcony and strata void area where applicable. Some units are mirror images of the floor plans shown in the brochure. Orientations and facings will differ depending on the unit you are purchasing, please refer to the key plan. The above plans and illustrations are subject to changes as may be required or approved by the relevant authorities and do not form part of any offer or contract. Areas are estimates only and are subject to final survey. The balcony shall not be enclosed unless with the approved balcony screen. For an illustration of the approved balcony screen, please refer to Annex 1 of this brochure.

2 Bedroom + Study

Type B7S

63 sqm / 678 sqft

- | | |
|---------------------------|---------------------------|
| Blk 1 #03-02 to #11-02 | MIRROR UNIT |
| Blk 3 #02-09 to #11-09 | Blk 5 #02-16 to #11-16 |
| Blk 7 #02-25 to #11-25 | Blk 9 #02-32 to #11-32 |
| Blk 11 #02-41 to #11-41 | Blk 13 #02-48 to #11-48 |
| Blk 25 #02-83 to #11-83 | Blk 15 #02-55 to #11-55 |
| Blk 35 #02-111 to #11-111 | Blk 17 #02-62 to #11-62 |
| Blk 37 #02-118 to #11-118 | Blk 27 #02-90 to #11-90 |
| Blk 41 #02-133 to #11-133 | Blk 39 #02-124 to #11-124 |
| Blk 47 #02-157 to #11-157 | Blk 43 #02-140 to #11-140 |
| Blk 51 #02-173 to #11-173 | Blk 45 #02-148 to #11-148 |
| Blk 55 #02-189 to #11-189 | Blk 49 #02-164 to #11-164 |
| Blk 57 #02-197 to #11-197 | Blk 53 #02-180 to #11-180 |



KEY PLAN NOT TO SCALE

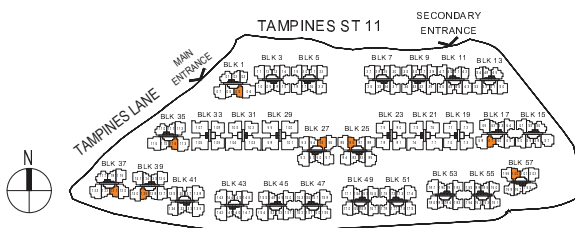
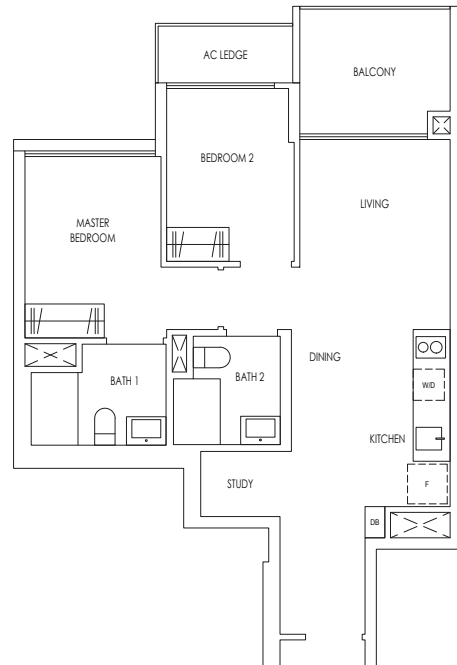
Type B8S

63 sqm / 678 sqft

- Blk 17 #02-67 to #12-67
 Blk 27 #04-95 to #12-95
 Blk 39 #02-129 to #12-129

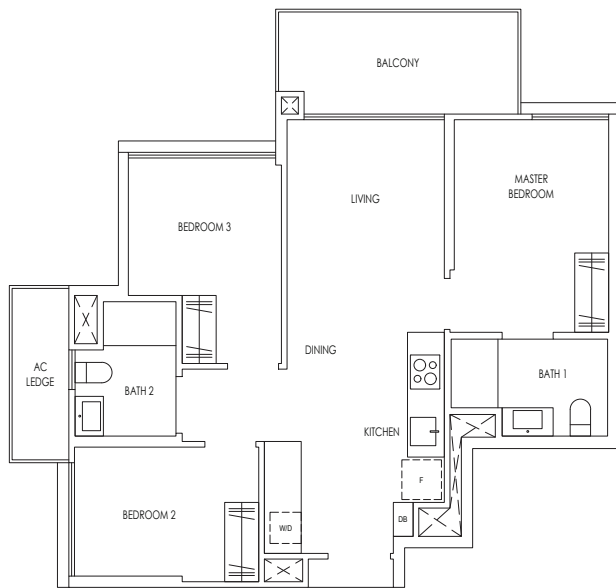
MIRROR UNIT

- Blk 1 #02-05 to #12-05
 Blk 25 #04-86 to #12-86
 Blk 35 #02-114 to #12-114
 Blk 37 #02-121 to #12-121
 Blk 57 #02-200 to #12-200



KEY PLAN NOT TO SCALE

Area includes AC ledge, balcony and strata void area where applicable. Some units are mirror images of the floor plans shown in the brochure. Orientations and facings will differ depending on the unit you are purchasing, please refer to the key plan. The above plans and illustrations are subject to changes as may be required or approved by the relevant authorities and do not form part of any offer or contract. Areas are estimates only and are subject to final survey. The balcony shall not be enclosed unless with the approved balcony screen. For an illustration of the approved balcony screen, please refer to Annex 1 of this brochure.



3 Bedroom

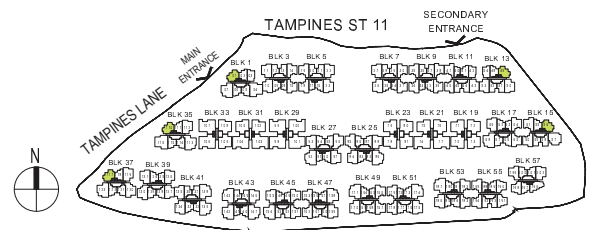
Type C1

76 sqm / 818 sqft

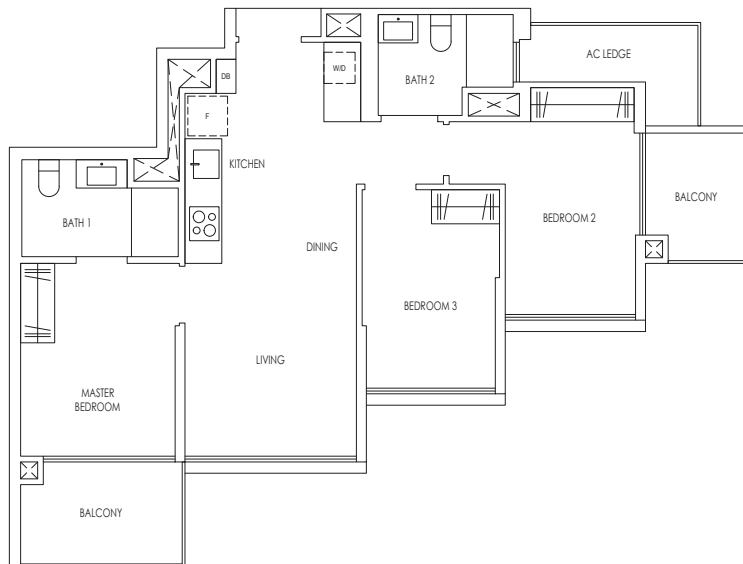
Blk 1 #03-01 to #12-01
 Blk 35 #02-110 to #12-110
 Blk 37 #02-117 to #12-117

MIRROR UNIT

Blk 13 #02-49 to #12-49
 Blk 15 #02-56 to #12-56



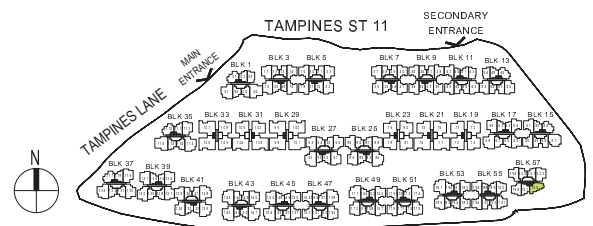
KEY PLAN NOT TO SCALE



Type C2

80 sqm / 861 sqft

Blk 57 #02-196 to #12-196



KEY PLAN NOT TO SCALE

Area includes AC ledge, balcony and strata void area where applicable. Some units are mirror images of the floor plans shown in the brochure. Orientations and facings will differ depending on the unit you are purchasing, please refer to the key plan. The above plans and illustrations are subject to changes as may be required or approved by the relevant authorities and do not form part of any offer or contract. Areas are estimates only and are subject to final survey. The balcony shall not be enclosed unless with the approved balcony screen. For an illustration of the approved balcony screen, please refer to Annex 1 of this brochure.

3 Bedroom

Type C3

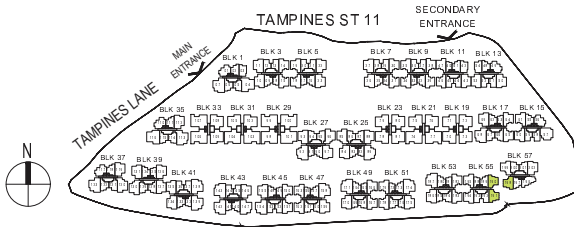
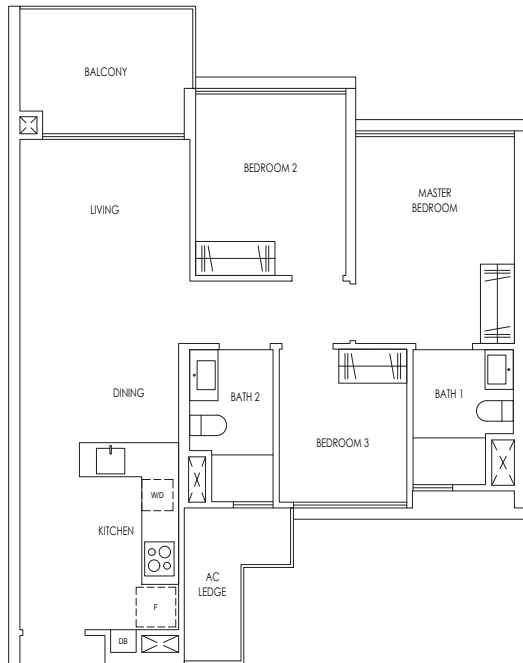
78 sqm / 840 sqft

Blk 55 #02-190 to #12-190

Blk 57 #02-198 to #12-198

MIRROR UNIT

Blk 55 #02-191 to #12-191



KEY PLAN NOT TO SCALE

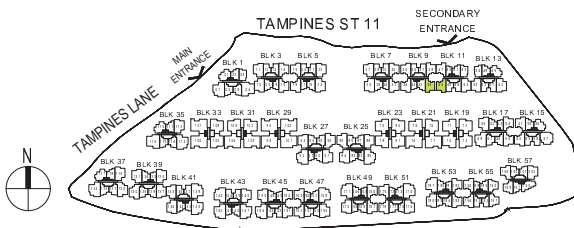
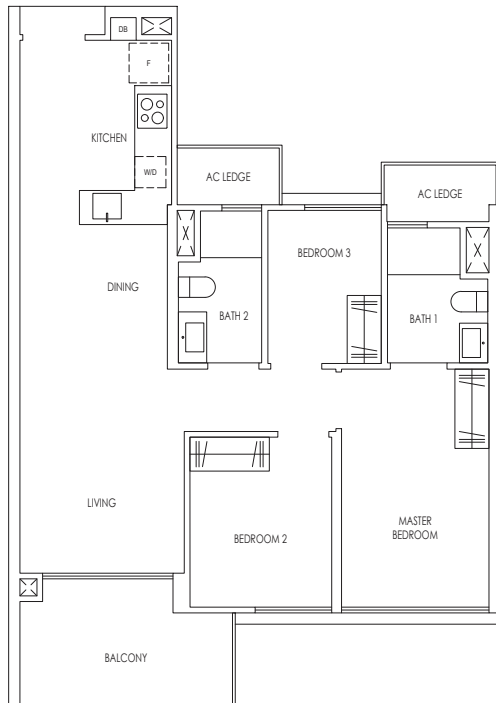
Type C4

79 sqm / 850 sqft

Blk 9 #02-39 to #12-39

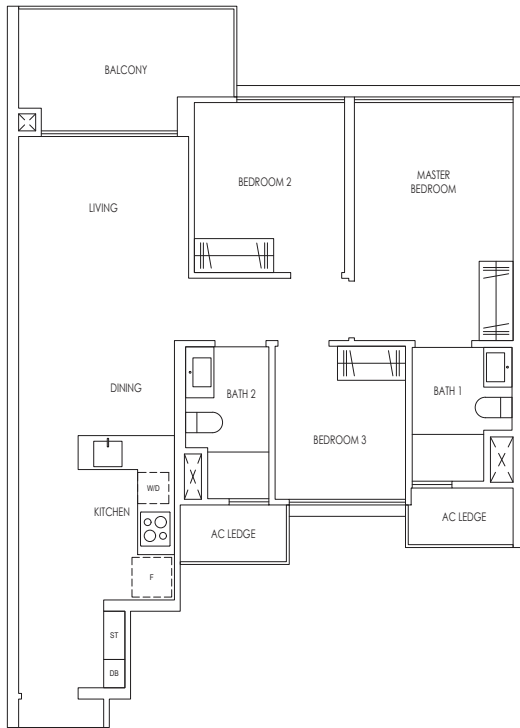
MIRROR UNIT

Blk 11 #02-46 to #12-46



KEY PLAN NOT TO SCALE

Area includes AC ledge, balcony and strata void area where applicable. Some units are mirror images of the floor plans shown in the brochure. Orientations and facings will differ depending on the unit you are purchasing, please refer to the key plan. The above plans and illustrations are subject to changes as may be required or approved by the relevant authorities and do not form part of any offer or contract. Areas are estimates only and are subject to final survey. The balcony shall not be enclosed unless with the approved balcony screen. For an illustration of the approved balcony screen, please refer to Annex 1 of this brochure.



3 Bedroom

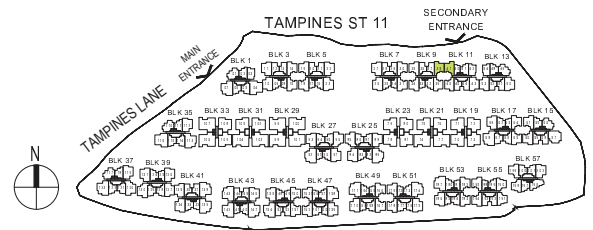
Type C5

82 sqm / 883 sqft

Blk 9 #02-38 to #12-38

MIRROR UNIT

Blk 11 #02-47 to #12-47



KEY PLAN NOT TO SCALE



Type C6

85 sqm / 915 sqft

Blk 3 #02-14 to #12-14

Blk 5 #02-18 to #12-18

Blk 7 #02-30 to #12-30

Blk 9 #02-34 to #12-34

Blk 15 #02-60 to #12-60

Blk 17 #02-64 to #12-64

Blk 45 #02-150 to #12-150

Blk 47 #02-162 to #12-162

Blk 49 #02-166 to #12-166

Blk 51 #02-178 to #12-178

Blk 53 #02-182 to #12-182

Blk 55 #02-194 to #12-194

MIRROR UNIT

Blk 3 #02-15 to #12-15

Blk 5 #02-19 to #12-19

Blk 7 #02-31 to #12-31

Blk 9 #02-35 to #12-35

Blk 15 #02-61 to #12-61

Blk 17 #02-65 to #12-65

Blk 45 #02-151 to #12-151

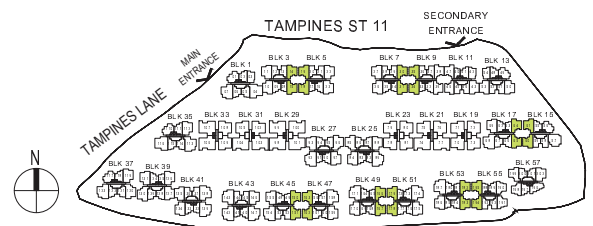
Blk 47 #02-163 to #12-163

Blk 49 #02-167 to #12-167

Blk 51 #02-179 to #12-179

Blk 53 #02-183 to #12-183

Blk 55 #02-195 to #12-195



KEY PLAN NOT TO SCALE

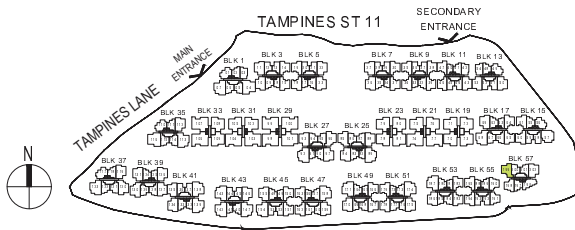
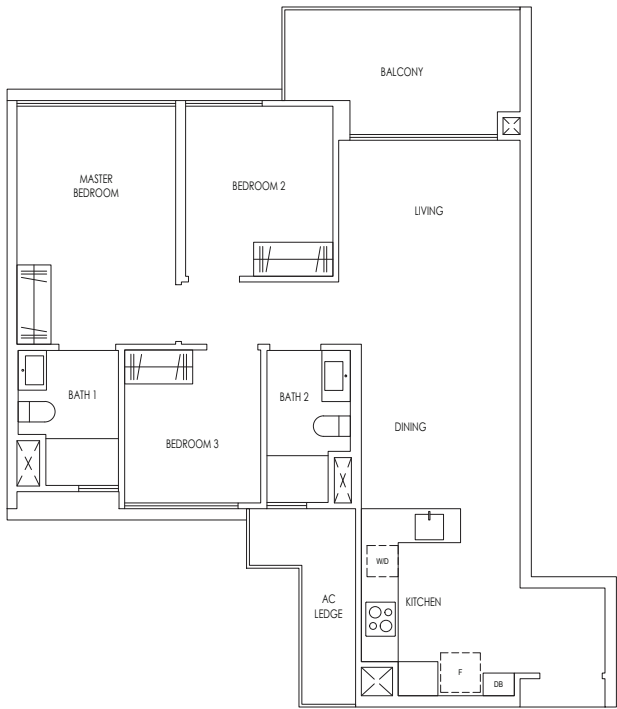
Area includes AC ledge, balcony and strata void area where applicable. Some units are mirror images of the floor plans shown in the brochure. Orientations and facings will differ depending on the unit you are purchasing, please refer to the key plan. The above plans and illustrations are subject to changes as may be required or approved by the relevant authorities and do not form part of any offer or contract. Areas are estimates only and are subject to final survey. The balcony shall not be enclosed unless with the approved balcony screen. For an illustration of the approved balcony screen, please refer to Annex 1 of this brochure.

3 Bedroom

Type C7

88 sqm / 947 sqft

Blk 57 #02-199 to #12-199



KEY PLAN NOT TO SCALE

3 Bedroom Premium

Type C8P

94 sqm / 1,012 sqft

Blk 11 #02-43 to #12-43

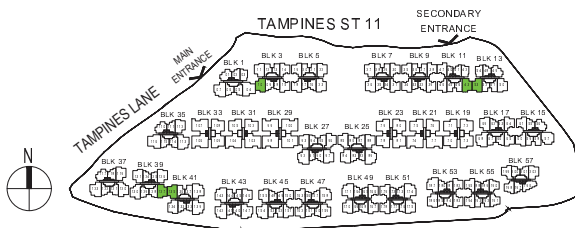
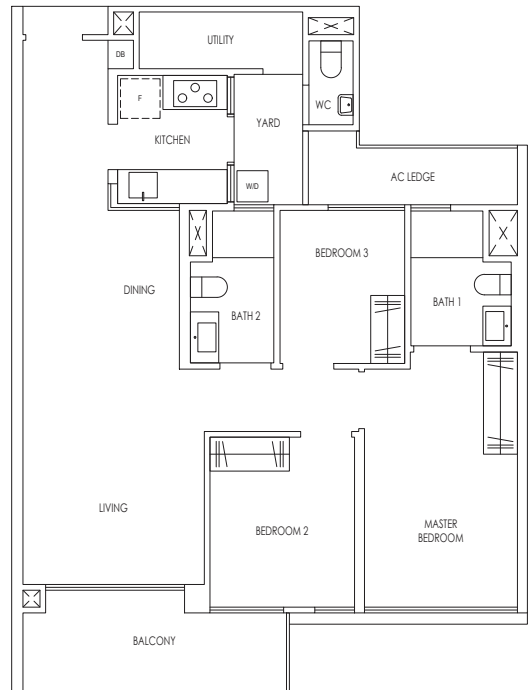
Blk 39 #02-127 to #12-127

Blk 41 #02-135 to #12-135

MIRROR UNIT

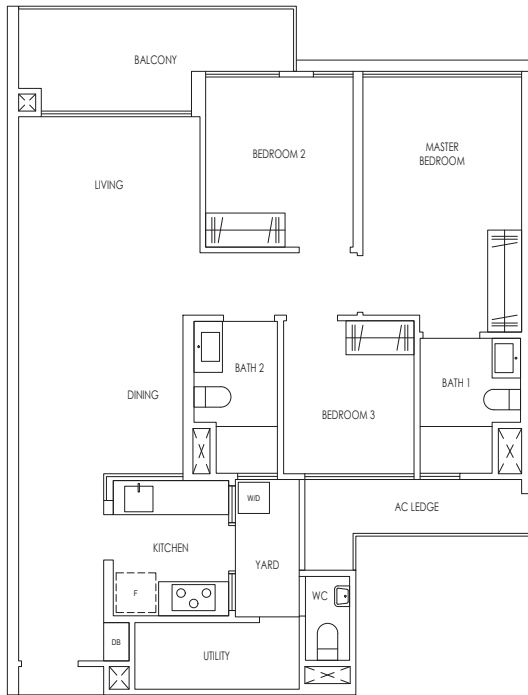
Blk 3 #02-10 to #12-10

Blk 13 #02-53 to #12-53



KEY PLAN NOT TO SCALE

Area includes AC ledge, balcony and strata void area where applicable. Some units are mirror images of the floor plans shown in the brochure. Orientations and facings will differ depending on the unit you are purchasing, please refer to the key plan. The above plans and illustrations are subject to changes as may be required or approved by the relevant authorities and do not form part of any offer or contract. Areas are estimates only and are subject to final survey. The balcony shall not be enclosed unless with the approved balcony screen. For an illustration of the approved balcony screen, please refer to Annex 1 of this brochure.



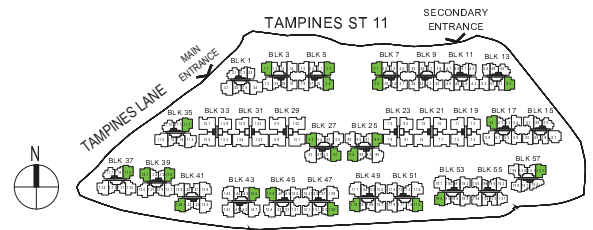
3 Bedroom Premium

Type C9P

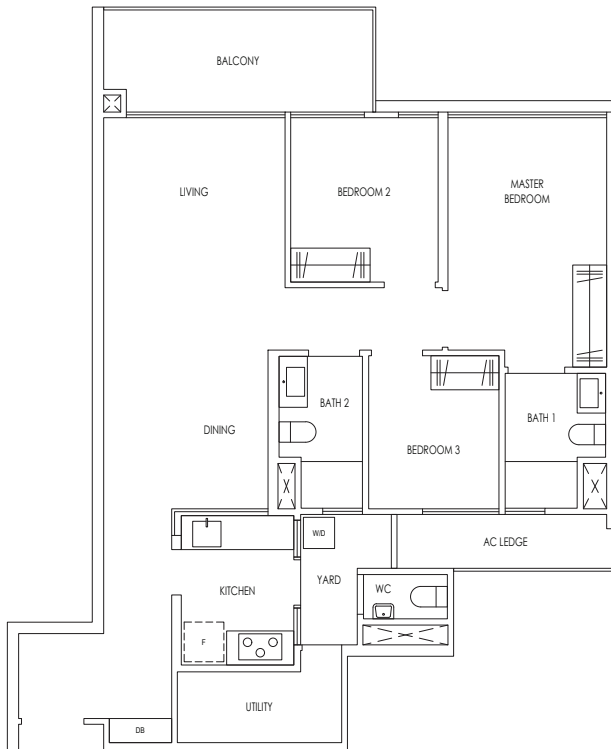
96 sqm / 1,033 sqft

Blk 5 #02-22 to #12-22
 Blk 7 #02-26 to #12-26
 Blk 25 #02-84 to #12-84
 Blk 25 #04-88 to #12-88
 Blk 35 #02-112 to #12-112
 Blk 37 #02-119 to #12-119
 Blk 39 #02-126 to #12-126
 Blk 41 #02-134 to #12-134
 Blk 43 #02-146 to #12-146
 Blk 49 #02-170 to #12-170
 Blk 53 #02-186 to #12-186
 Blk 57 #02-202 to #12-202

MIRROR UNIT
 Blk 3 #02-11 to #12-11
 Blk 5 #02-23 to #12-23
 Blk 7 #02-27 to #12-27
 Blk 13 #02-50 to #12-50
 Blk 17 #02-69 to #12-69
 Blk 27 #04-93 to #12-93
 Blk 27 #02-97 to #12-97
 Blk 39 #02-131 to #12-131
 Blk 45 #02-155 to #12-155
 Blk 47 #02-159 to #12-159
 Blk 51 #02-175 to #12-175



KEY PLAN NOT TO SCALE

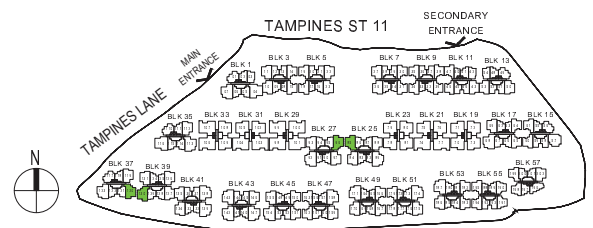


Type C10P

101 sqm / 1,087 sqft

Blk 27 #04-96 to #12-96
 Blk 39 #02-130 to #12-130

MIRROR UNIT
 Blk 25 #04-85 to #12-85
 Blk 37 #02-120 to #12-120



KEY PLAN NOT TO SCALE

Area includes AC ledge, balcony and strata void area where applicable. Some units are mirror images of the floor plans shown in the brochure. Orientations and facings will differ depending on the unit you are purchasing, please refer to the key plan. The above plans and illustrations are subject to changes as may be required or approved by the relevant authorities and do not form part of any offer or contract. Areas are estimates only and are subject to final survey. The balcony shall not be enclosed unless with the approved balcony screen. For an illustration of the approved balcony screen, please refer to Annex 1 of this brochure.

4 Bedroom

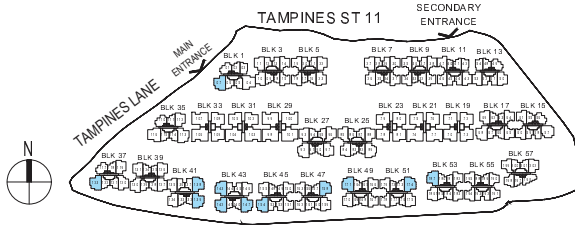
Type D1

115 sqm / 1,238 sqft

- Blk 41 #02-139 to #12-139
- Blk 43 #02-143 to #12-143
- Blk 43 #02-147 to #12-147
- Blk 49 #02-171 to #12-171
- Blk 53 #02-187 to #12-187

MIRROR UNIT

- Blk 1 #02-07 to #12-07
- Blk 37 #02-123 to #12-123
- Blk 41 #02-138 to #12-138
- Blk 43 #02-142 to #12-142
- Blk 45 #02-154 to #12-154
- Blk 47 #02-158 to #12-158
- Blk 51 #02-174 to #12-174



KEY PLAN NOT TO SCALE

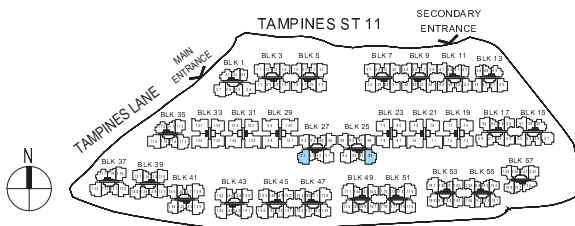
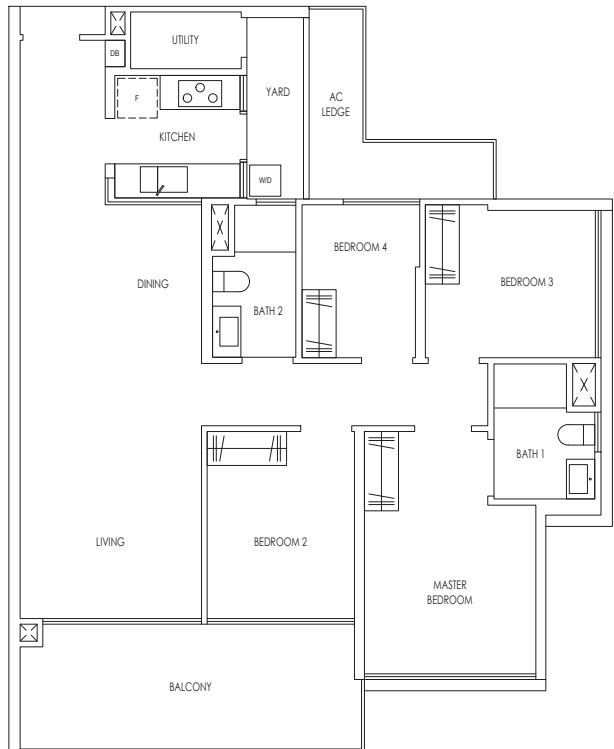
Type D2

115 sqm / 1,238 sqft

- Blk 25 #02-89 to #12-89

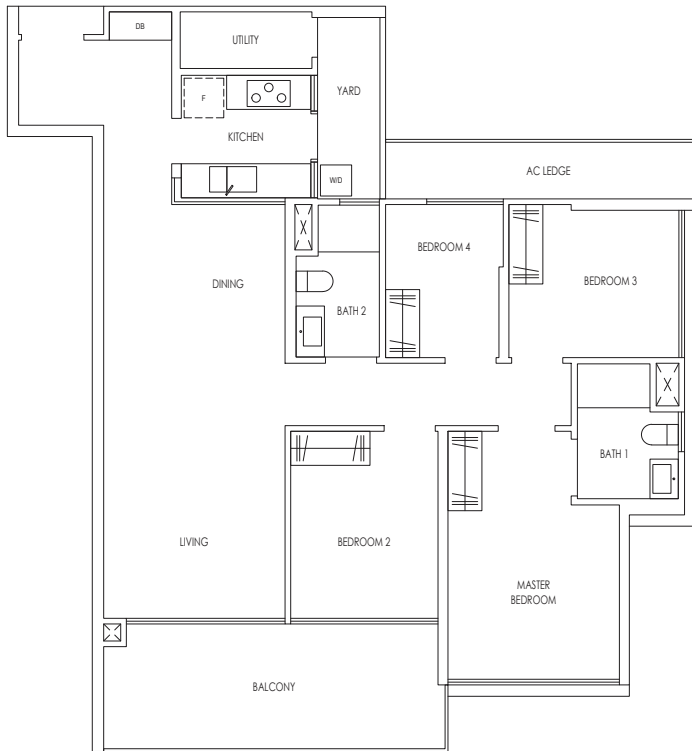
MIRROR UNIT

- Blk 27 #02-92 to #12-92



KEY PLAN NOT TO SCALE

Area includes AC ledge, balcony and strata void area where applicable. Some units are mirror images of the floor plans shown in the brochure. Orientations and facings will differ depending on the unit you are purchasing, please refer to the key plan. The above plans and illustrations are subject to changes as may be required or approved by the relevant authorities and do not form part of any offer or contract. Areas are estimates only and are subject to final survey. The balcony shall not be enclosed unless with the approved balcony screen. For an illustration of the approved balcony screen, please refer to Annex 1 of this brochure.



4 Bedroom

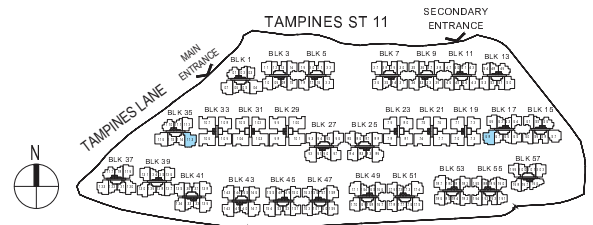
Type D3

118 sqm / 1,270 sqft

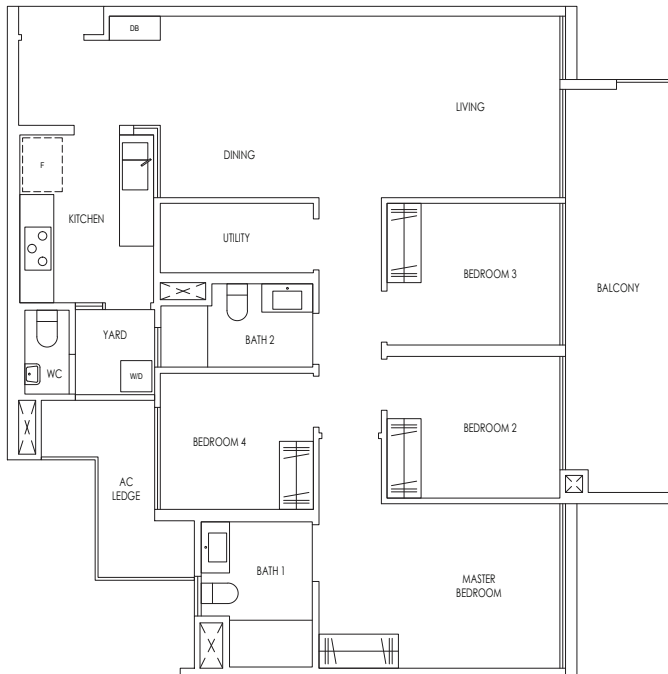
Blk 35 #02-113 to #12-113

MIRROR UNIT

Blk 17 #02-68 to #12-68



KEY PLAN NOT TO SCALE

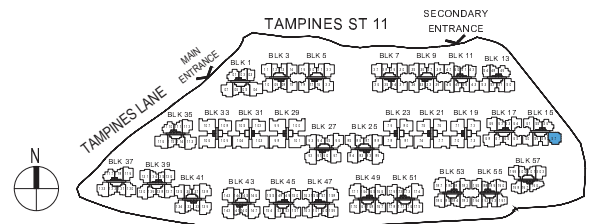


4 Bedroom Premium

Type D4P

119 sqm / 1,281 sqft

Blk 15 #02-57 to #12-57



KEY PLAN NOT TO SCALE

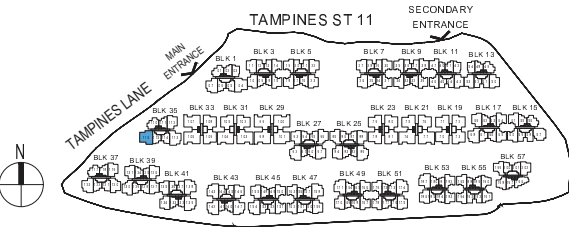
Area includes AC ledge, balcony and strata void area where applicable. Some units are mirror images of the floor plans shown in the brochure. Orientations and facings will differ depending on the unit you are purchasing, please refer to the key plan. The above plans and illustrations are subject to changes as may be required or approved by the relevant authorities and do not form part of any offer or contract. Areas are estimates only and are subject to final survey. The balcony shall not be enclosed unless with the approved balcony screen. For an illustration of the approved balcony screen, please refer to Annex 1 of this brochure.

4 Bedroom Premium

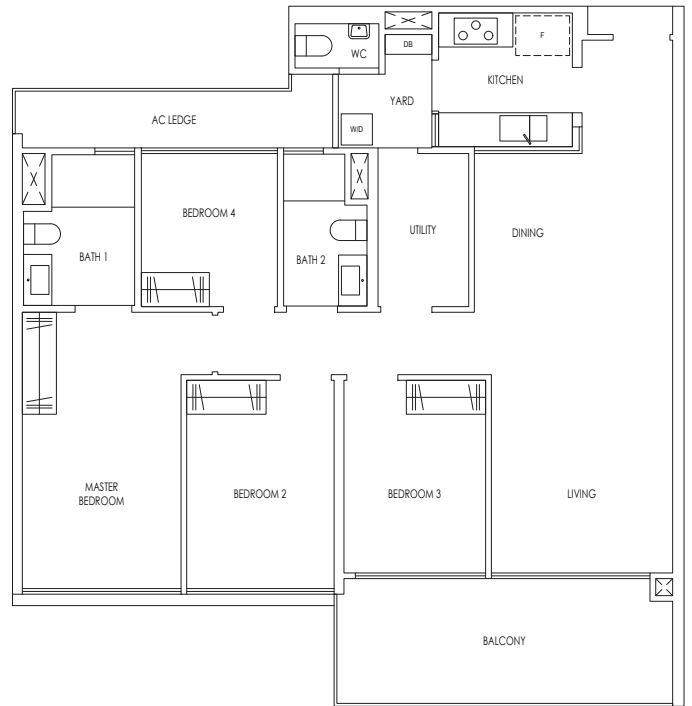
Type D5P

125 sqm / 1,345 sqft

Blk 35 #02-116 to #12-116



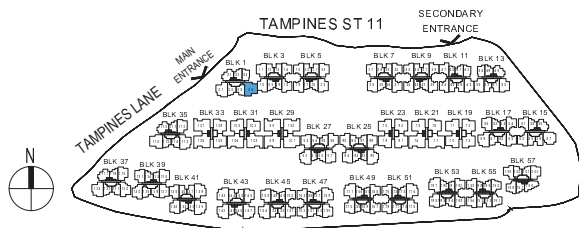
KEY PLAN NOT TO SCALE



Type D6P

127 sqm / 1,367 sqft

Blk 1 #02-04 to #12-04



KEY PLAN NOT TO SCALE



Area includes AC ledge, balcony and strata void area where applicable. Some units are mirror images of the floor plans shown in the brochure. Orientations and facings will differ depending on the unit you are purchasing, please refer to the key plan. The above plans and illustrations are subject to changes as may be required or approved by the relevant authorities and do not form part of any offer or contract. Areas are estimates only and are subject to final survey. The balcony shall not be enclosed unless with the approved balcony screen. For an illustration of the approved balcony screen, please refer to Annex 1 of this brochure.

4 Bedroom Premium

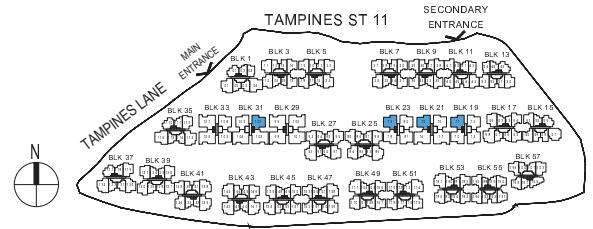


Type D7P

118 sqm / 1,270 sqft

Blk 19 #12-71
Blk 21 #12-75
Blk 23 #12-79

MIRROR UNIT
Blk 31 #12-102



KEY PLAN NOT TO SCALE

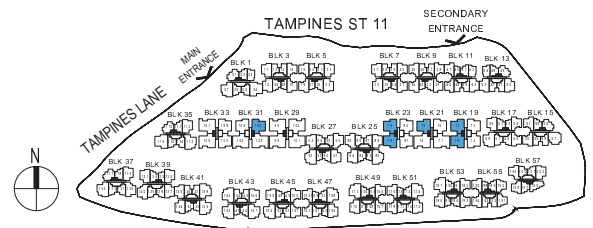


Type D8P

123 sqm / 1,324 sqft

Blk 19 #02-71 to #11-71
Blk 21 #02-75 to #11-75
Blk 23 #02-79 to #11-79

MIRROR UNIT
Blk 19 #02-70 to #12-70
Blk 23 #02-78 to #12-78
Blk 31 #02-102 to #11-102



KEY PLAN NOT TO SCALE

Area includes AC ledge, balcony and strata void area where applicable. Some units are mirror images of the floor plans shown in the brochure. Orientations and facings will differ depending on the unit you are purchasing, please refer to the key plan. The above plans and illustrations are subject to changes as may be required or approved by the relevant authorities and do not form part of any offer or contract. Areas are estimates only and are subject to final survey. The balcony shall not be enclosed unless with the approved balcony screen. For an illustration of the approved balcony screen, please refer to Annex 1 of this brochure.

4 Bedroom Premium

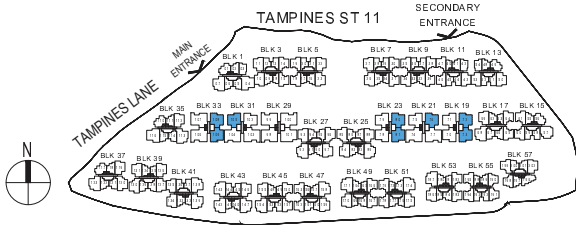
Type D9P

124 sqm / 1,335 sqft

- Blk 19 #02-72 to #12-72
- Blk 21 #02-76 to #12-76
- Blk 23 #02-80 to #12-80
- Blk 33 #02-108 to #12-108

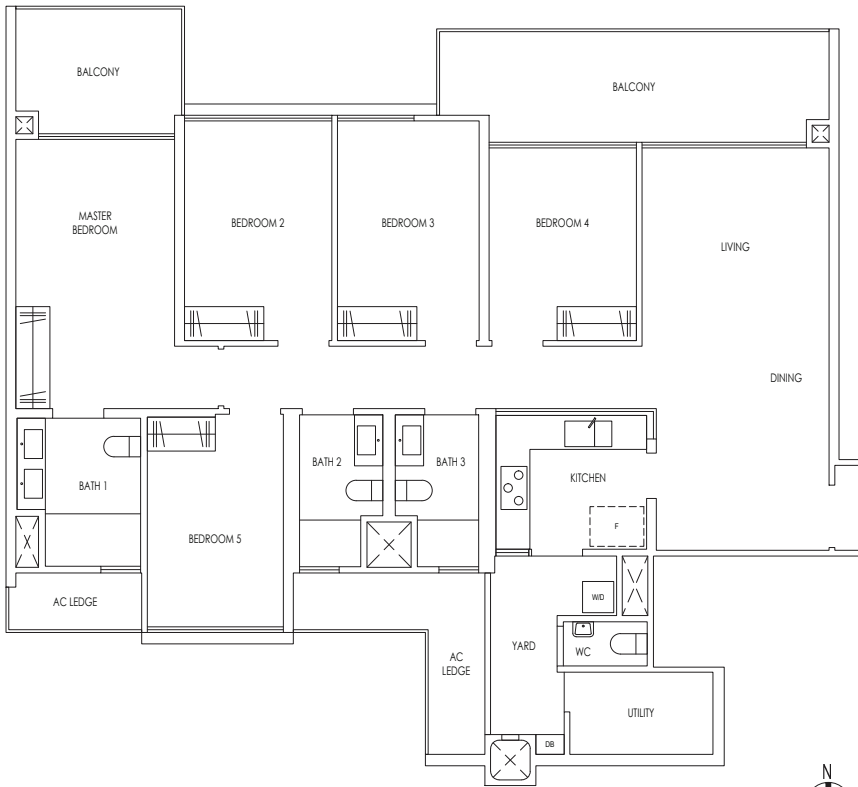
MIRROR UNIT

- Blk 19 #02-73 to #12-73
- Blk 23 #02-81 to #12-81
- Blk 31 #02-105 to #12-105
- Blk 33 #02-109 to #12-109



KEY PLAN NOT TO SCALE

Area includes AC ledge, balcony and strata void area where applicable. Some units are mirror images of the floor plans shown in the brochure. Orientations and facings will differ depending on the unit you are purchasing, please refer to the key plan. The above plans and illustrations are subject to changes as may be required or approved by the relevant authorities and do not form part of any offer or contract. Areas are estimates only and are subject to final survey. The balcony shall not be enclosed unless with the approved balcony screen. For an illustration of the approved balcony screen, please refer to Annex 1 of this brochure.



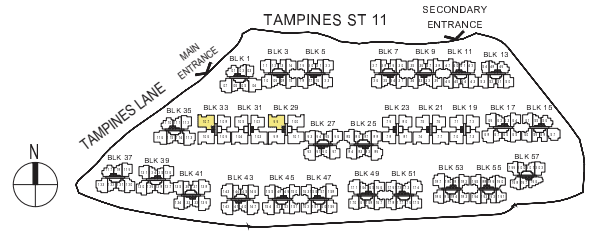
5 Bedroom

Type E1

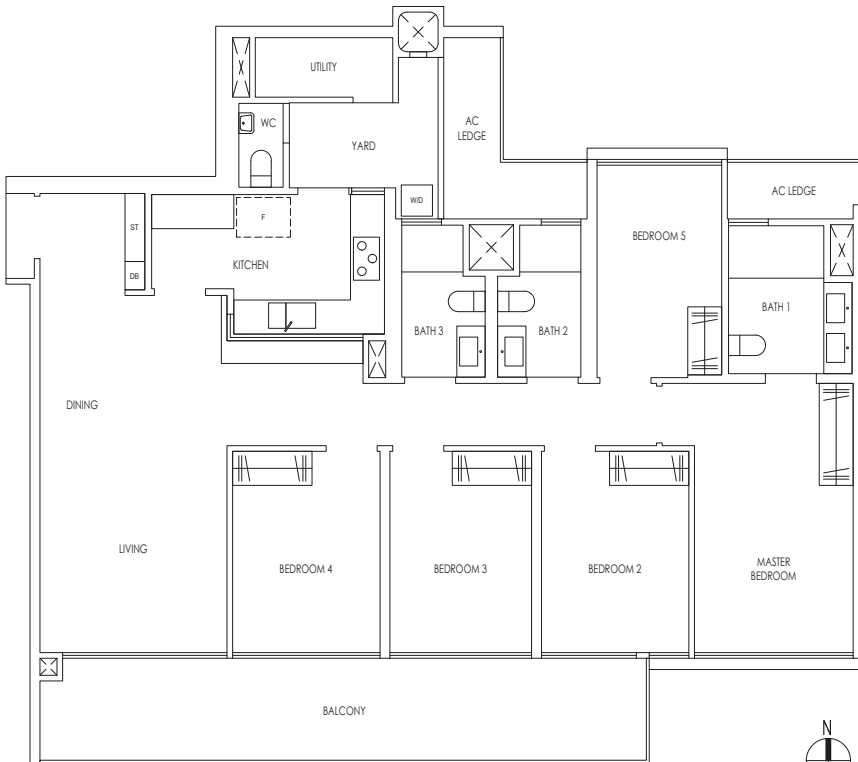
155 sqm / 1,668 sqft

Blk 29 #12-99

Blk 33 #12-107



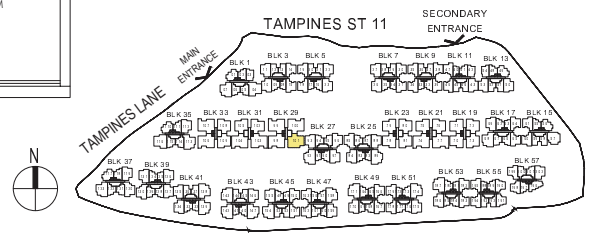
KEY PLAN NOT TO SCALE



Type E2

157 sqm / 1,690 sqft

Blk 29 #02-101 to #12-101



KEY PLAN NOT TO SCALE

Area includes AC ledge, balcony and strata void area where applicable. Some units are mirror images of the floor plans shown in the brochure. Orientations and facings will differ depending on the unit you are purchasing, please refer to the key plan. The above plans and illustrations are subject to changes as may be required or approved by the relevant authorities and do not form part of any offer or contract. Areas are estimates only and are subject to final survey. The balcony shall not be enclosed unless with the approved balcony screen. For an illustration of the approved balcony screen, please refer to Annex 1 of this brochure.

5 Bedroom

Type E3

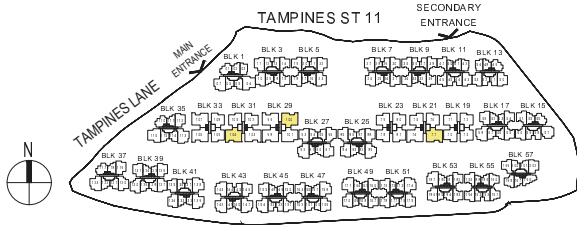
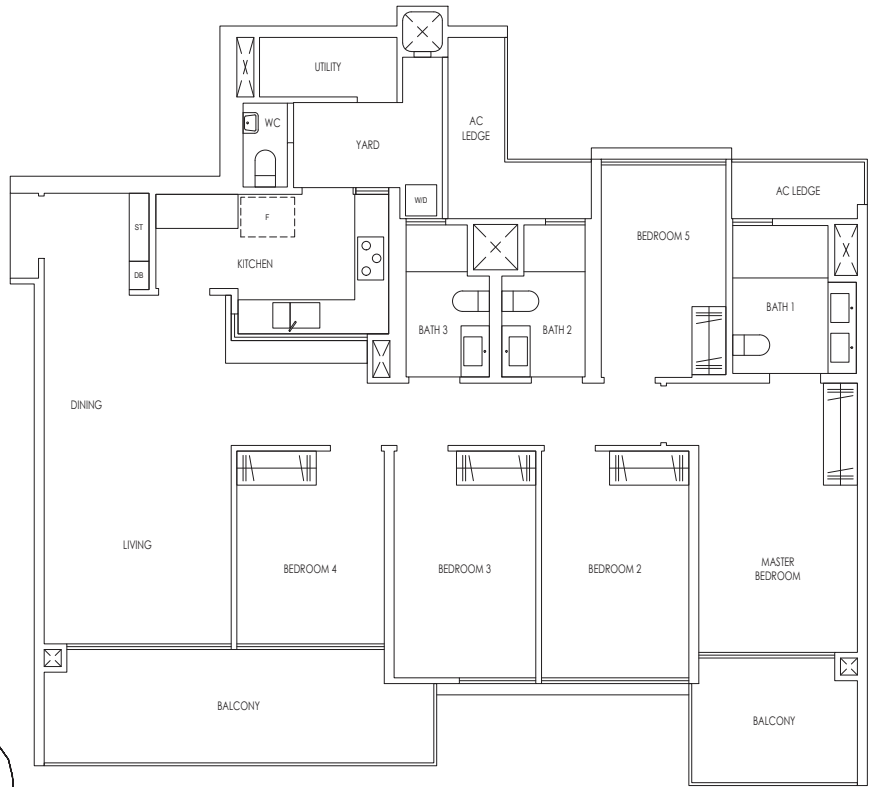
159 sqm / 1,711 sqft

Blk 21 #02-77 to #12-77

MIRROR UNIT

Blk 29 #02-100 to #12-100

Blk 31 #02-104 to #12-104



KEY PLAN NOT TO SCALE

Type E4

160 sqm / 1,722 sqft

Blk 29 #02-99 to #11-99

Blk 31 #02-103 to #12-103

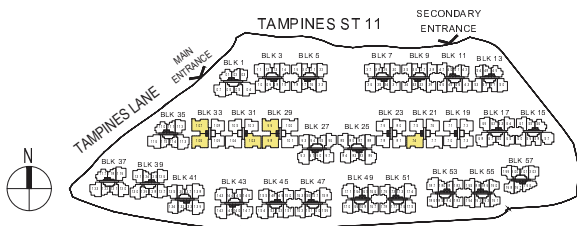
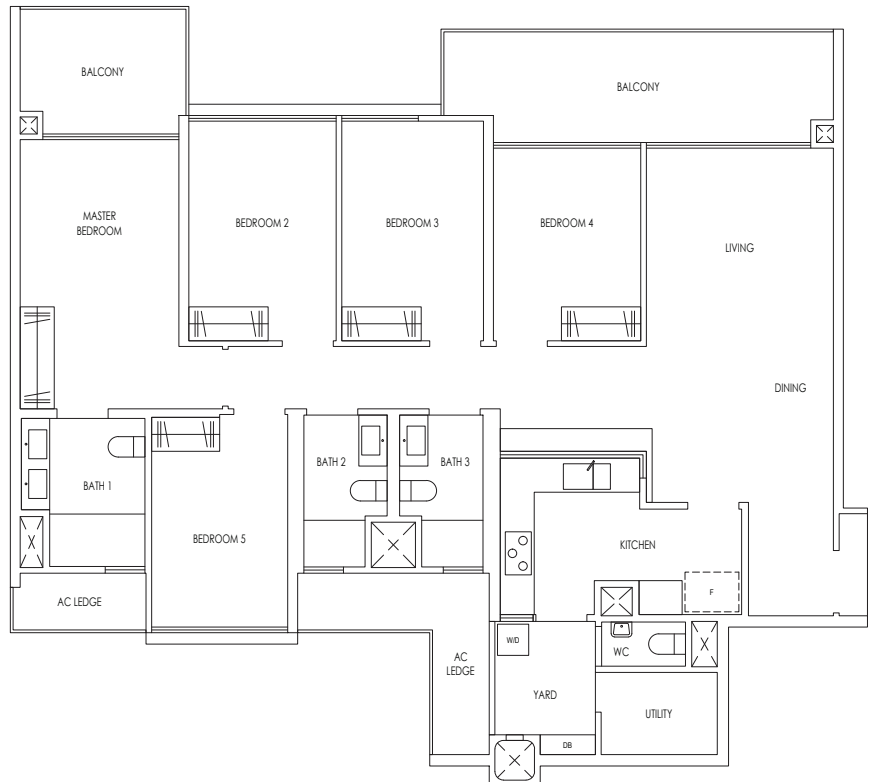
Blk 33 #02-107 to #11-107

MIRROR UNIT

Blk 21 #02-74 to #12-74

Blk 29 #02-98 to #12-98

Blk 33 #02-106 to #12-106



KEY PLAN NOT TO SCALE

Area includes AC ledge, balcony and strata void area where applicable. Some units are mirror images of the floor plans shown in the brochure. Orientations and facings will differ depending on the unit you are purchasing, please refer to the key plan. The above plans and illustrations are subject to changes as may be required or approved by the relevant authorities and do not form part of any offer or contract. Areas are estimates only and are subject to final survey. The balcony shall not be enclosed unless with the approved balcony screen. For an illustration of the approved balcony screen, please refer to Annex 1 of this brochure.